

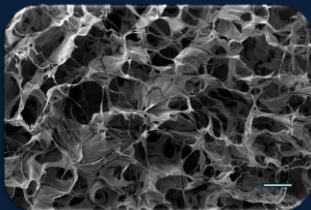


CellSpace HA™

Limited yield. Endless consumables.

Not anymore.

The matrix that changes everything.



**Same flask.
Radically different output.**

≥12×

mAb Yield

vs. 2D · same T25

+54%

EV Production

MSC-derived

-80%

Cost / Unit

flask + medium + labor

5 mo.

Matrix Stability

culture stopped by choice

FORMATS

T25 → T225

Erlenmeyers

Petri Dishes

Custom



- ✓ Drop-in · same incubator · zero CapEx
- ✓ 100% animal-free · no coating ever
- ✓ Image directly in flask - no extraction



OCTOCELLS

Sound familiar?

YOUR PROBLEMS

- ✗ Cells lost at every medium change
- ✗ Confluence = subculture, every time
- ✗ Dozens of flasks, insufficient yield
- ✗ Collagen / Matrigel coating required

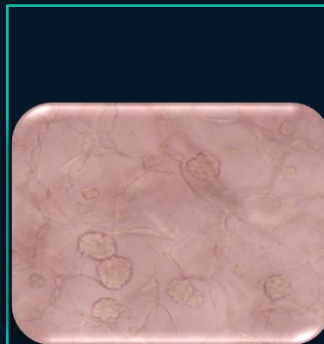
CELLSPACE HA™ ANSWER

- ✓ Cells anchored - zero loss at harvest
- ✓ 5 months stable culture - stopped by choice
- ✓ Drop-in: same incubator, same pipette
- ✓ Crosslinked HA - no coating, 100% animal-free

[See the full CellSpace HA™ story](#)

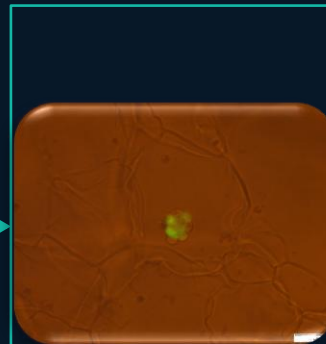
Inside the matrix - what your cells actually do

Brightfield · GFP fluorescence · Molecule diffusion



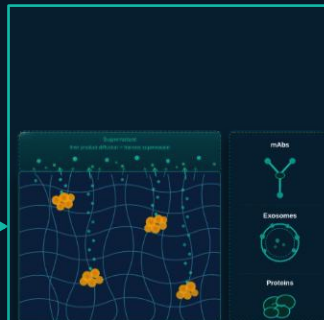
Brightfield

Cell clusters in HA matrix



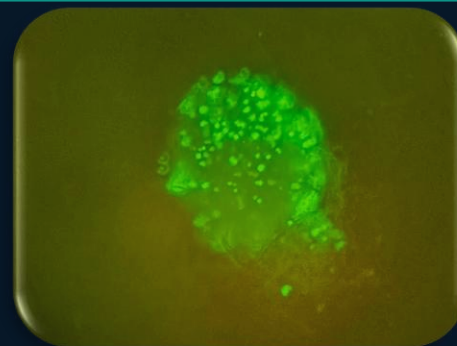
GFP Fluorescence

Active expression confirmed



Free Diffusion

Harvest = collect supernatant



GFP macro view - cells proliferating & expressing in CellSpace HA™ matrix · Fluorescence imaging