

Figure 1: (a) PLA (NatureWork, 3251D) pellets, (b and c) PLA powders

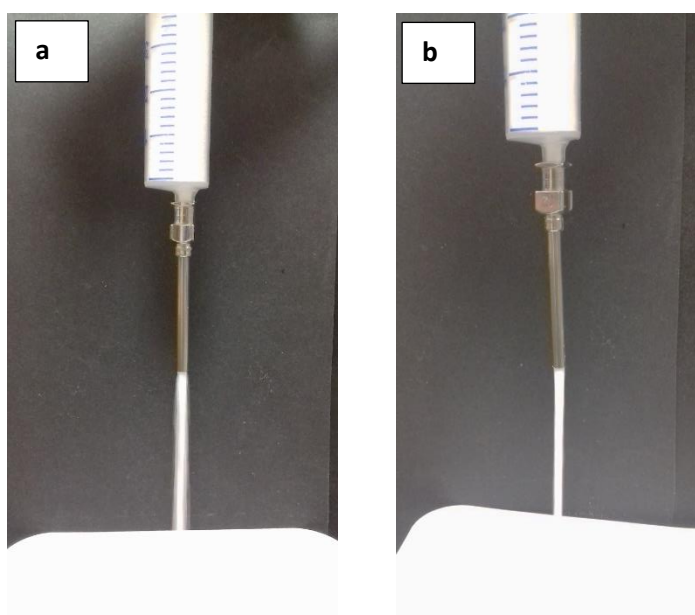


Figure 2: Flow properties (due to gravity): PLA powder (a) 200-400 μm and (b) submicron-200 μm through a 12 G Needle (~ 2.15 mm Inner diameter). Full videos can be provided upon request.

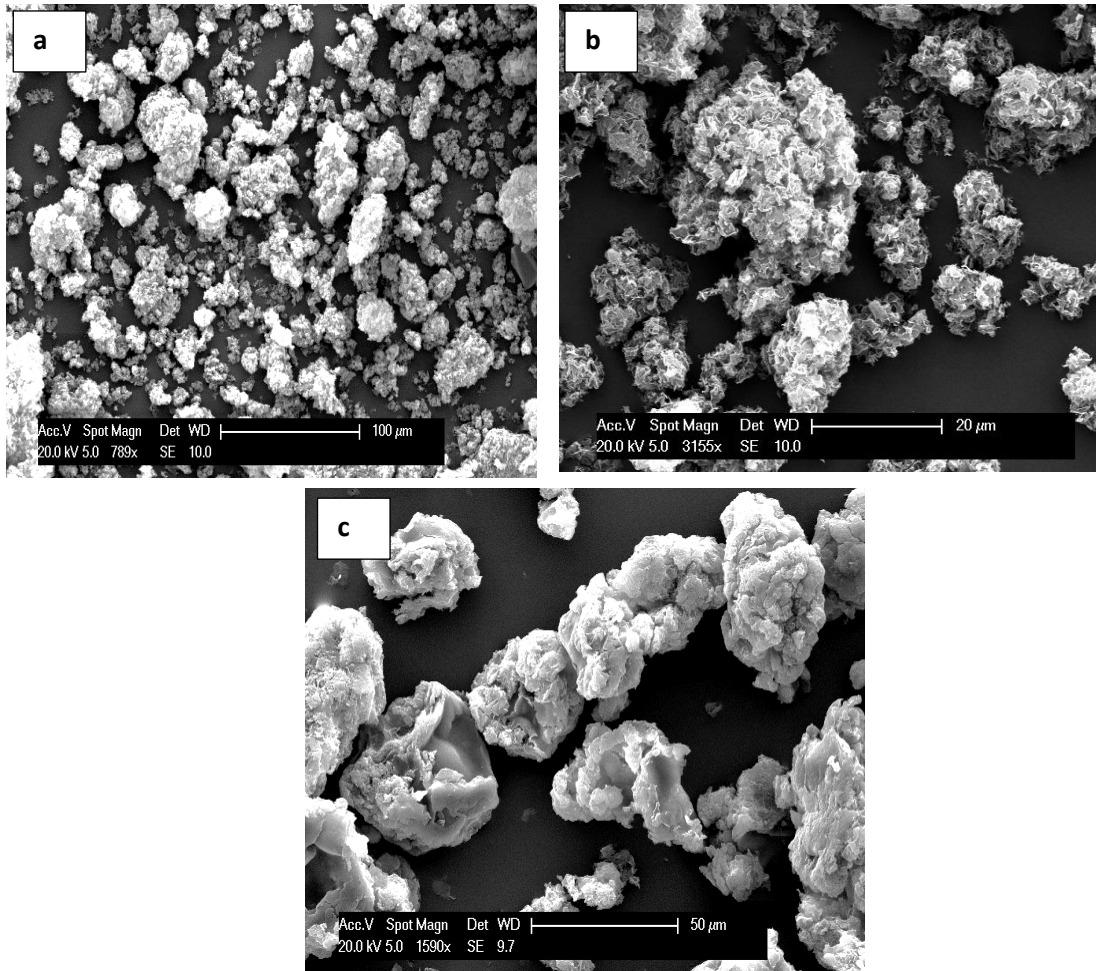


Figure 3: SEM micrographs of a-b) PLA powder and c) nanocomposite powder.

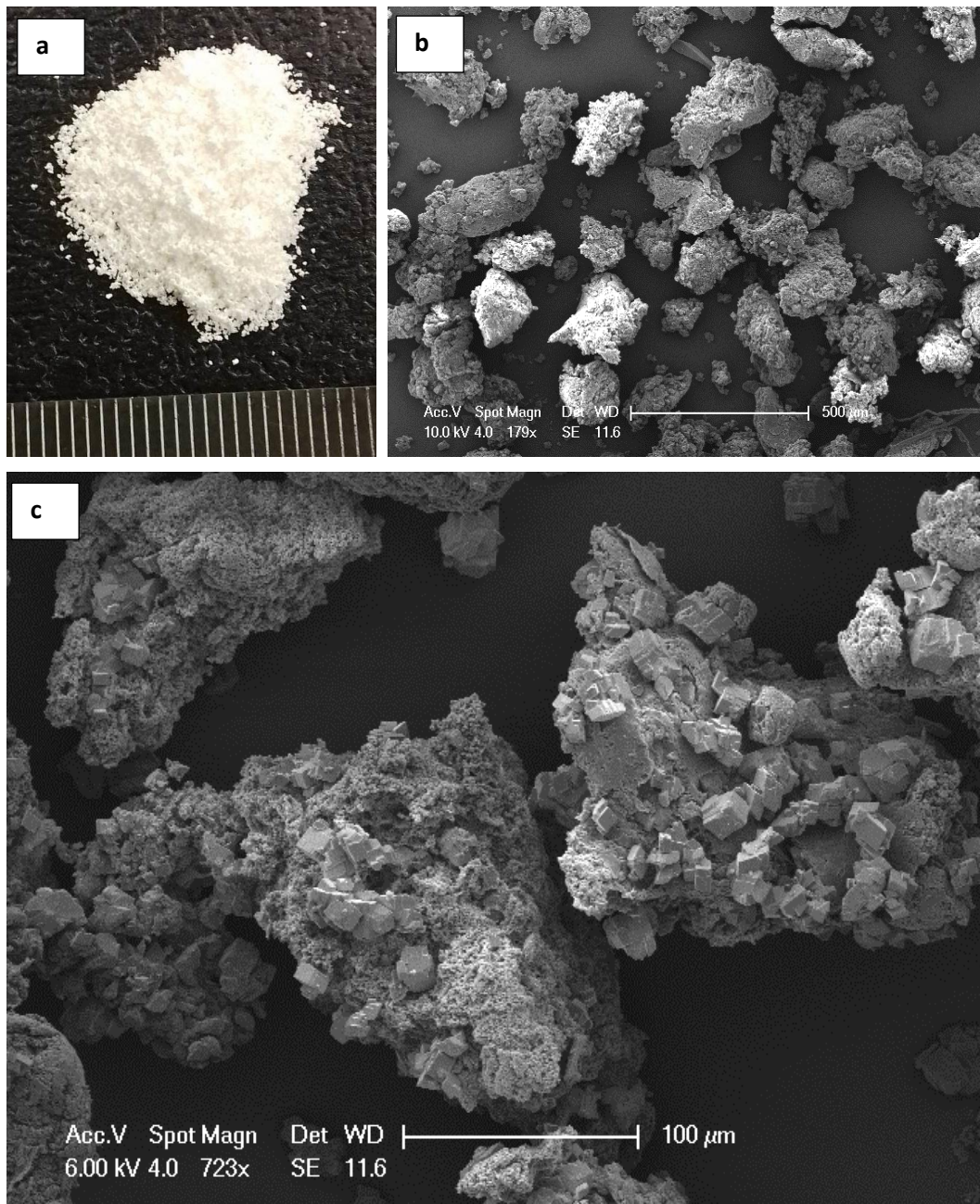


Figure 4: a) photograph of PP powder, b) SEM micrograph PP powder and c) PP with CaCO₃ powder.